

# 2025 Comprehensive Plan

Planning Commission Visioning Session | April 24th, 2024



# Goals for Today

- Intro to the Comp Plan
- Initial Visioning Exercises
- Discussions & Straw Polling





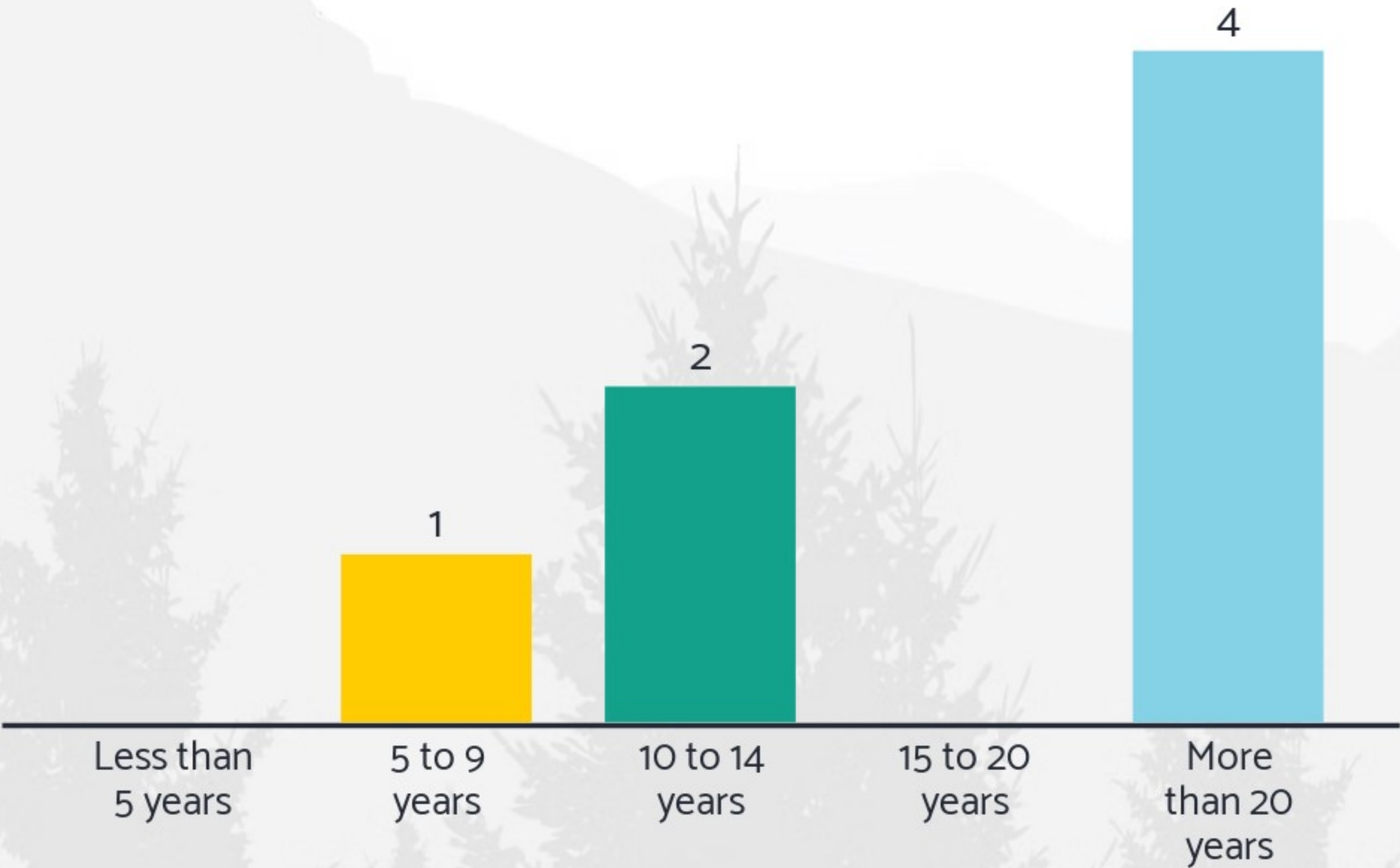


# Updating a Comp Plan

- Updated every 10 years
- GMA required elements
- Consultants for Transportation, Economic Development, Climate Resiliency, & Technical Support
- Adoption: December 2025



# How many years have you lived in Lacey?



WHY DID YOU FIRST MOVE HERE

# What first drew you to Lacey?

14 responses





## What was something about Lacey you found surprising after moving here?

The number of lakes located here.

That I could go from the highway to a rural area in 10 minutes

The closeness of the community

The Growth

Parks and Recreation program

Traffic

It wasn't as rural as I had anticipated.

The closeness of the community

## What was something about Lacey you found surprising after moving here?

the surprising city boundary

Blend between Lacey, Olympia, and Tumwater

Lack of a city corner

The warehouses being built after I bought my home

difference in community from 10 years ago

fast pace of growth

There were not a lot of sidewalks.

No real downtown area.



# What was something about Lacey you found surprising after moving here?

Confusing borders between cities and county	Excellent	Good	Good
Bike trailsParks	Parks, trails, shopping options, wildlife protected	Cycling	Easy freeway access



# What was something about Lacey you found surprising after moving here?

Traffic

Warehouses

Loss of trees

Homeless

Homeless

Druggies

Single home

Protect trees



## What was something about Lacey you found surprising after moving here?

Starter home

Reuse of large buildings

Community. Engagement

Let the market dictate

Sufficient parking



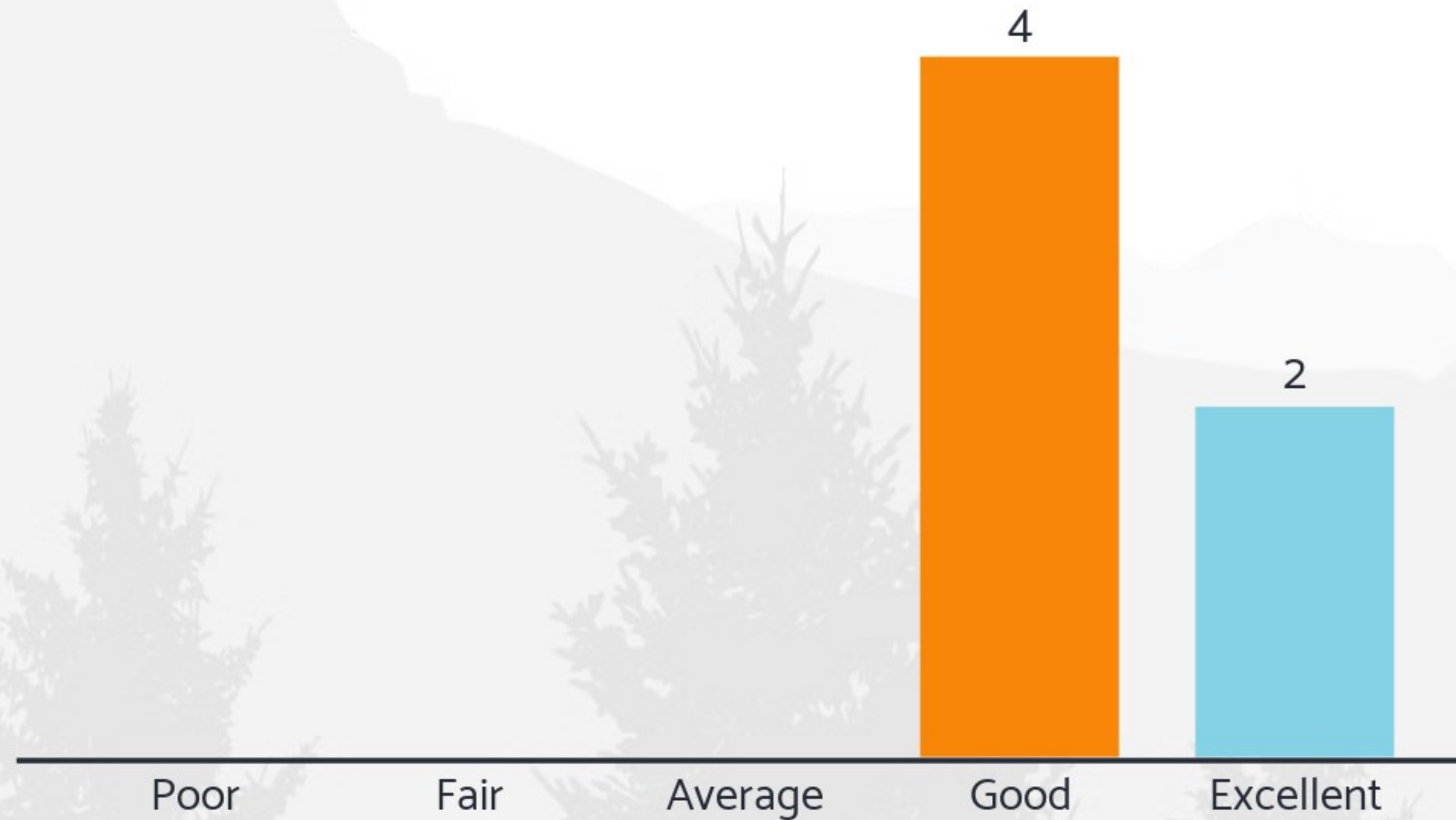
# Quality of Life

*How our culture and values match with our goals, expectations, standards, and concerns.*  
- World Health Organization





# How would you rate the overall quality of life in Lacey?





## What positive factors influenced your answer to the quality of life question?

Small town feel.

Close proximity to parks

parks

low crime and safe

Lots of trails, parks, and green spaces.

Great parks, good leadership, comfortable atmosphere, welcoming community

welcoming community

Multicultural community



## What positive factors influenced your answer to the quality of life question?

trails

shopping options

Close to big cities.

Very supportive of the military.

clean

Well maintained infrastructure.

Accessibility to recreation trails clean air

You can work close to home.



## What positive factors influenced your answer to the quality of life question?

good schools

Community

clean air

good roads

Good lighting and traffic  
flow

family friendly

ability to participate in  
government

More community wide  
events



# What positive factors influenced your answer to the quality of life question?

Variety of housing and cost

loss of trees

LCK OF HI TECH JOBS

bedroom community for jobs to the north

bedroom community for jobs to the north

no college town vibe



## What negative factors influenced your answer to the quality of life question?

Lack of dining and gathering spaces

Cost of housing has increased exponentially.

Would love a more vibrant city center

The cost of housing.

The increase in crime.

Starting to experience big city problems

Nothing to do - nightlife, museums, clubs

Lack of indoor activities for kids.



# What negative factors influenced your answer to the quality of life question?

Septic Tanks

Lack of sidewalks in neighborhoods

Lack of high quality employment opportunities

Houselessness

no college town vibe



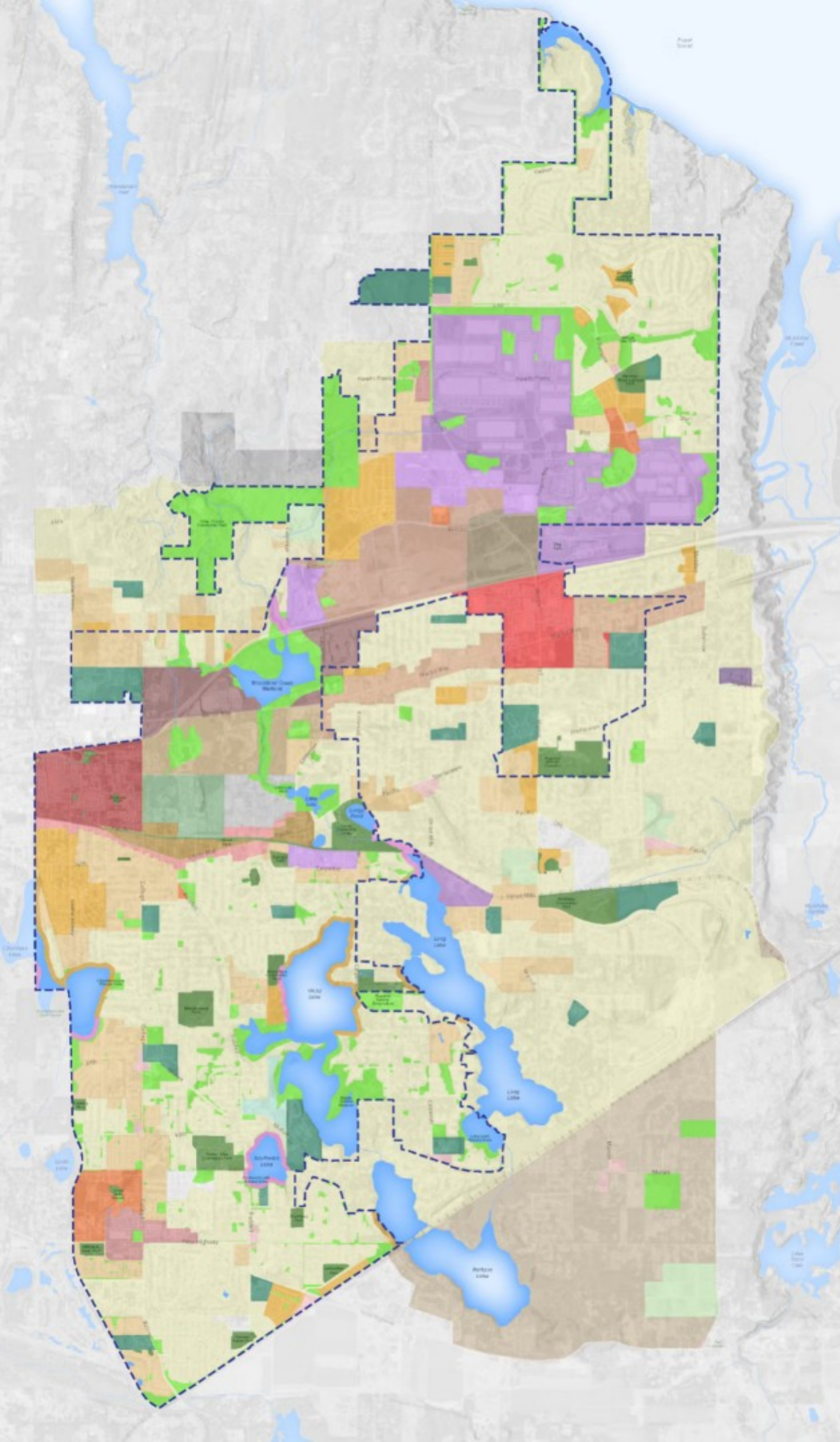
An aerial sketch of a town, showing a central green field surrounded by various buildings and trees. The style is a loose, artistic drawing with muted colors.

# Comp Plan Elements

The Growth Management Act (GMA) identifies specific elements to be included within a comprehensive plan:

- *Land Use*
- *Housing*
- *Transportation*
- *Climate Change and Resiliency*
- *Economic Development*





# Land Use Element

Acts as a community guide for decisions about when, where, and how future development takes place.



KNOWING WHAT YOU KNOW NOW

# What priorities should we have for the Land Use portion of the Comp Plan?

24 responses

A word cloud of 24 responses for the Land Use portion of the Comp Plan. The words are arranged in a cluster, with some repeated. The colors of the words are: orange, teal, blue, and yellow. The background features a faint silhouette of evergreen trees and mountains.

- keep small town feeling
- environment preservation
- affordability
- cohesiveness with develop
- city center
- climate mitigation
- affordability for residen
- preserving green space
- prevent sprawl
- lack of a center
- encourage condos
- reuse of large buildings
- pedestrian corridors
- affordable homes
- open space
- housing variety
- connection
- broader interest developm
- casual interactions
- availability
- affordable housing option
- access
- parking spot reform
- parking



# Housing Element

Plan for and accommodate housing affordable to all economic segments, promote a variety of residential densities and housing types, and the preservation of existing stock.



KNOWING WHAT YOU KNOW NOW

# What priorities should we have for the Housing portion of the Comp Plan?

32 responses







# Climate Change & Resiliency Elements

Adapt to and mitigate the effects of a changing climate. This section can take the form of a single chapter or be integrated throughout the plan.



KNOWING WHAT YOU KNOW NOW

# What priorities should we have for the Climate & Resiliency portions of the Comp Plan?

26 responses







# Transportation Element

Develop and maintain a street network that emphasizes a multimodal transportation system supporting all transportation types.



KNOWING WHAT YOU KNOW NOW

# What priorities should we have for the Transportation portion of the Comp Plan?

17 responses







# Economic Development Element

Ensure a healthy economy that is characterized by quality job creation, retention, and the resources to provide adequate services.



KNOWING WHAT YOU KNOW NOW

# What priorities should we have for the Economic Development portion of the Comp Plan?

22 responses



A word cloud of 22 responses for economic development priorities. The words are arranged in a roughly circular pattern, with some oriented vertically. The colors of the text include teal, orange, blue, and yellow.

- attract high pay industie
- public private partnershi
- veteran owned business
- better builder symposium
- women owned businesses
- entertainment venues
- venue for events
- family wage jobs
- indoor recreation
- promote networking
- gathering places
- local food co-ops
- complemetary uses
- attract high wage jobs
- sports facilities
- more local businesses
- after hours recreation
- diversifying businesses
- arts and performance orgs
- public pool
- nightlife
- job growth



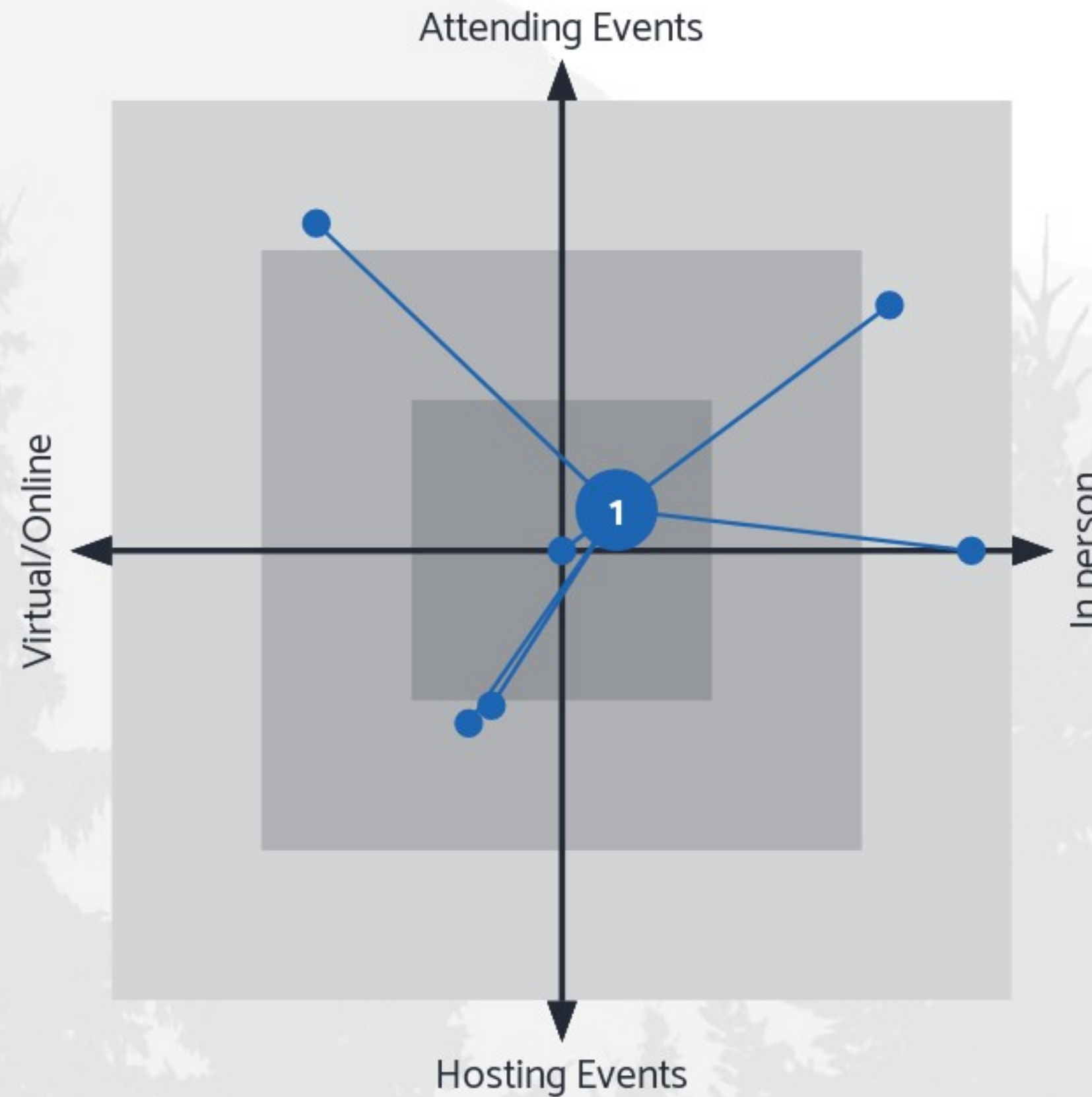


# Community Engagement

The GMA places a strong emphasis on community engagement, requiring “*early and continuous public participation*”.



# What is your preferred blend of outreach?



1 Outreach Format



## This update is a success if....

We protect Lacey core values of protecting environment even w the changes

The public feels heard and change is significant and measurable. Changes encompass all elements of the plan - balance.

We set Lacey up to be the vibrant community of the future. People will be able to live, work, play, and retire within the community.

We attract growth that reflects resident priorities.

We engage and garner community support and motivate participation in the building of a better community.

We are able to keep Lacey's small town feel alive through preserving the environment and creating a path to ownership for everyone.

Affordable housing mandated, green spaces preserved, walkability increased, good community engagement, ground water protected, green energy increases, nightlife options.

Creating an environment of bettering the quality of in the community and prospering the businesses that invest in the community



FINISH THE STATEMENT:

# This update is a success if....

If the people have access to high paying jobs, community can afford to live here, tree cover INCREASES, creation of a cohesive city ID, reduction in traffic congestion