



ECONOMIC DEVELOPMENT

ECONOMIC GROWTH IN LACEY'S FUTURE!

- **Improved Quality of Life**

Economic growth can support amenities that provide spaces for gatherings and social events, services (such as grocery stores and restaurants) within close proximity of residents, and living wage jobs.

- **Strong Infrastructure**

Economic growth supports Lacey's investment in roads, public transportation, utilities, and recreational spaces.

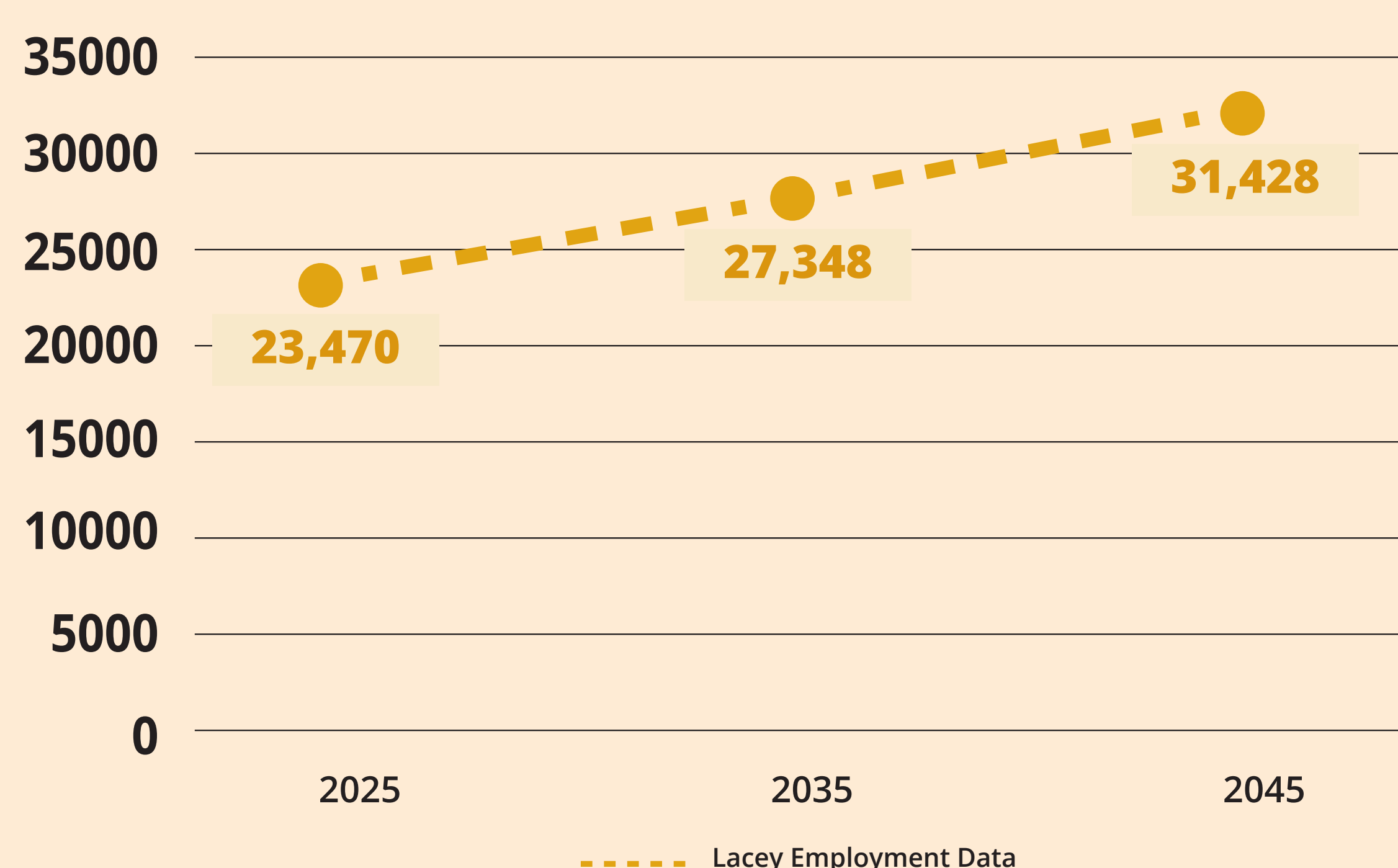
- **Attracting Talent and Innovation**

Fostering a vibrant economy that attracts skilled workers while supporting programs that encourage local entrepreneurs and small businesses.



Economic Growth Projections

The Washington State Employment Security Department projects a 1.4% annual job growth over the next decade.



2025: 23,470
(current jobs)

2035: 27,348
(increase of 3,550 jobs)

2045: 31,428
(increase of 7,629 jobs)

The Growth Management Act

Washington State's Growth Management Act (GMA) requires that cities address economic development in their Comprehensive Plans, focusing on promoting job creation, enhancing business opportunities, and supporting a diverse economy.

Economic development under the Comprehensive Plan must address the following:

- **Policies for Economic Growth:** Outlining goals and strategies to promote business and job creation.
- **Land Use Planning:** Identifying and zoning areas for commercial, industrial, and mixed-use development.
- **Transportation and Infrastructure:** Ensuring Lacey has the necessary infrastructure to support new businesses and residents



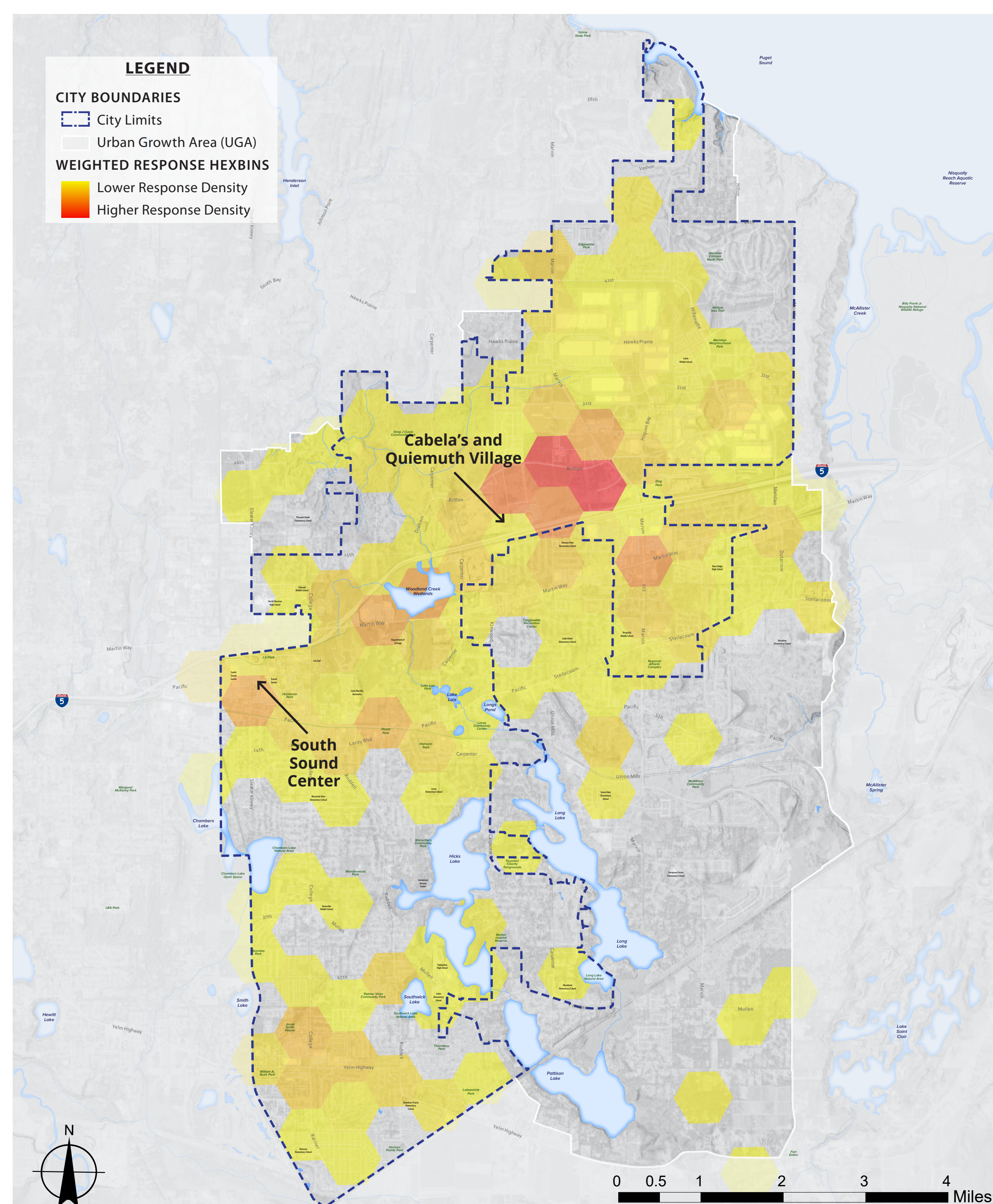


ECONOMIC DEVELOPMENT

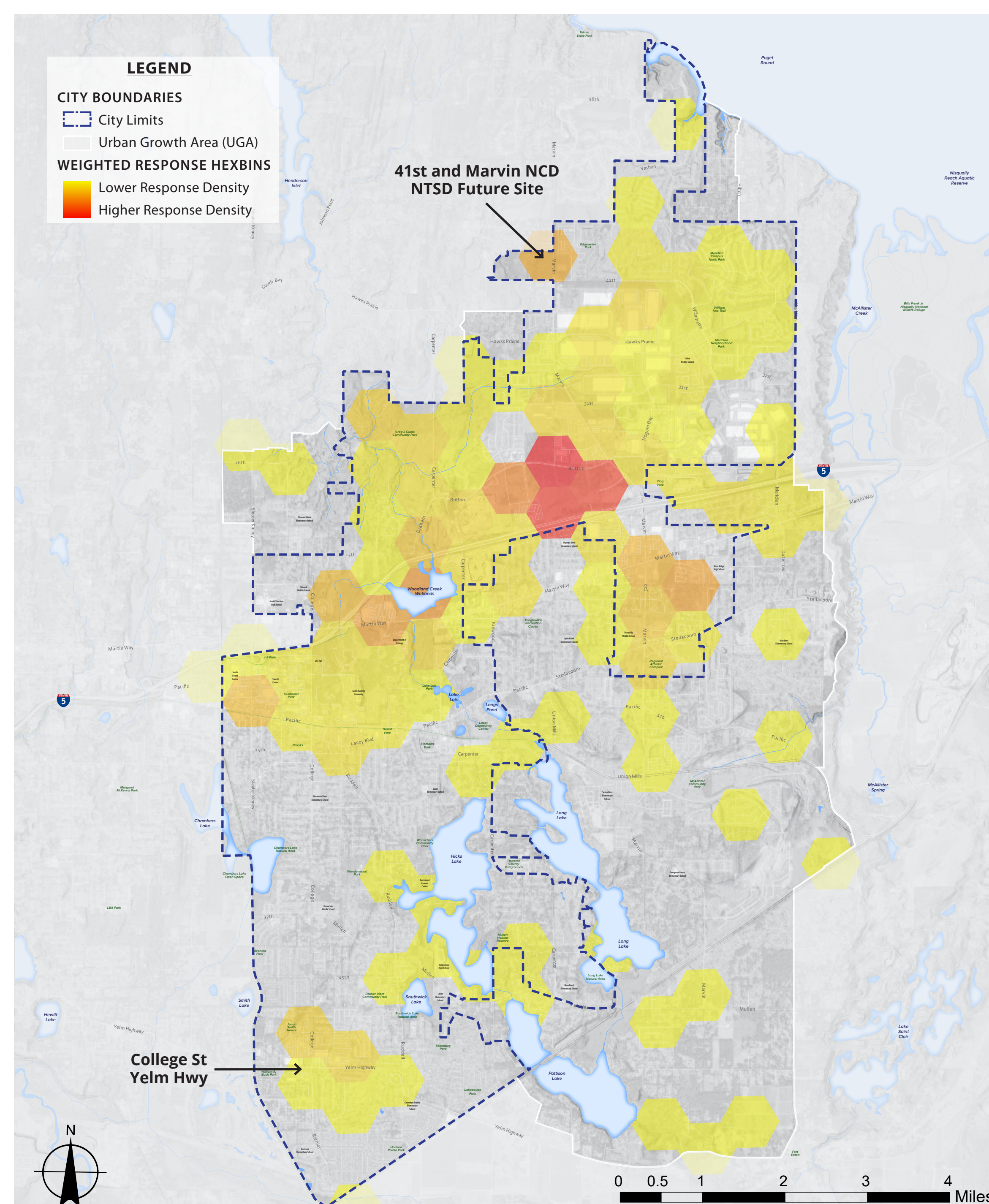
Where should new businesses and industry be located?

Lacey community members identified where they think new commercial business and light industry should be located.

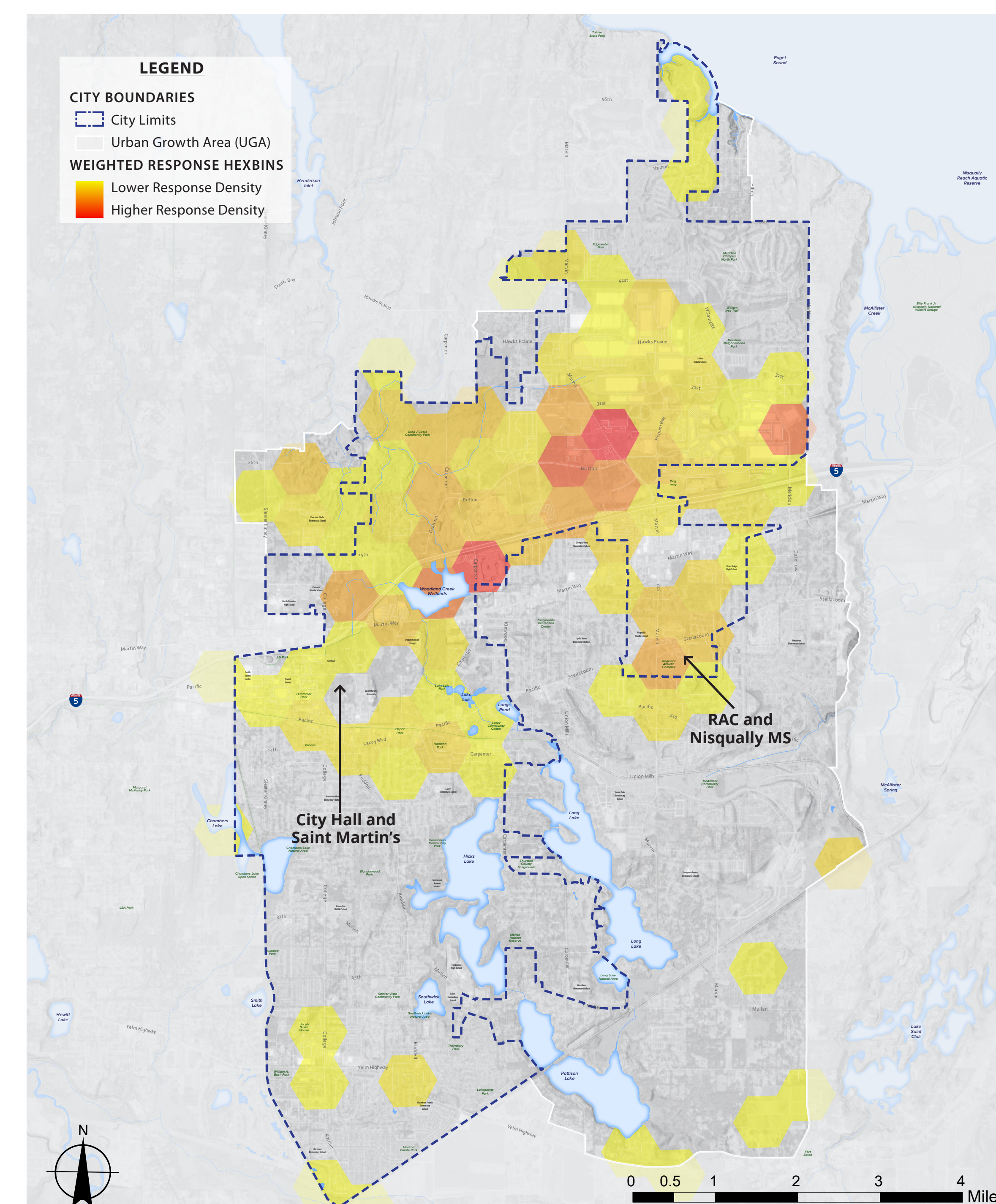
General Commercial



Light Commercial



Light Industrial



Current projections show 20,000 more people moving to the area over the next 20 years. With this in mind, Lacey must find space for approximately 9,000 new jobs.

Based on results from the Lacey Community Survey

